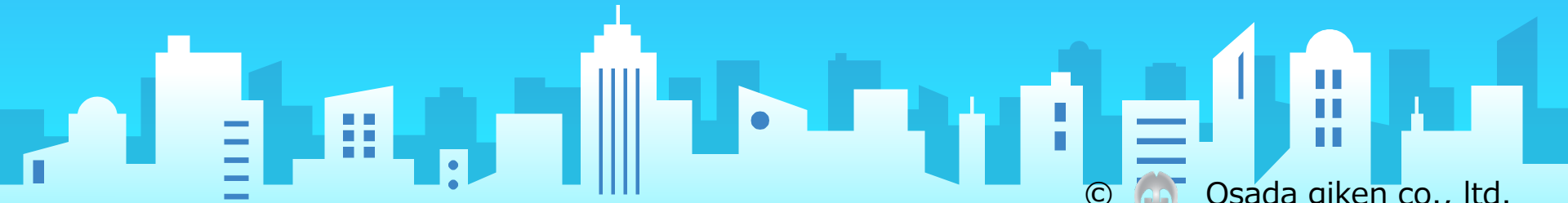


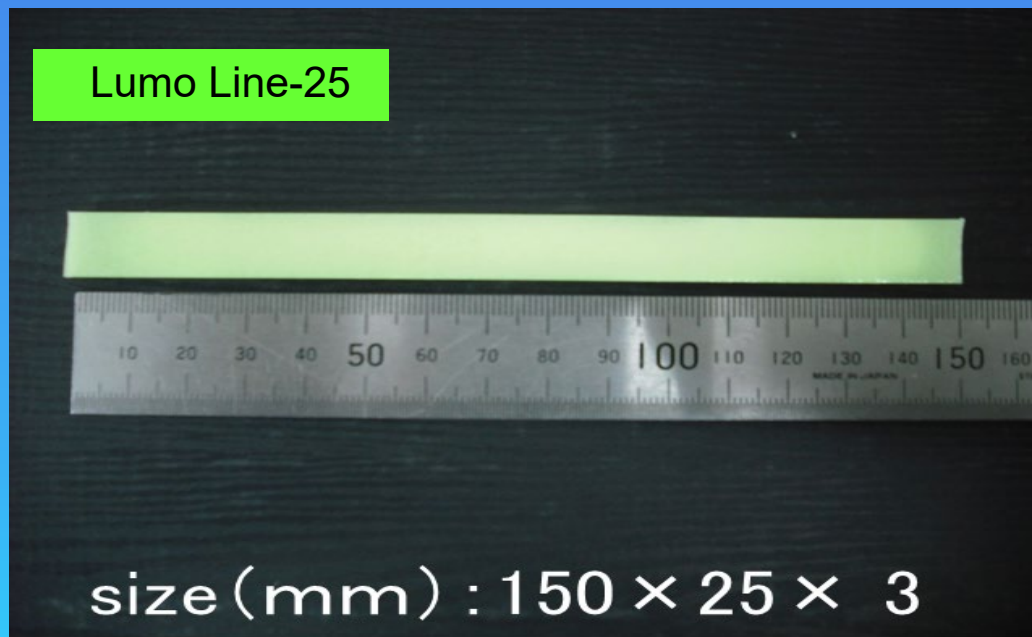


High photo luminescent line for outside

Lumo Line



Osada giken co., ltd.



Lumo line is a high class photo luminescent line product for safety in dark circumstances. It can be applied to pavement, stairs, and other surfaces. We have sold Lumo Line not only for Japan but also for some foreign countries over 30,000 lines.

Example 1

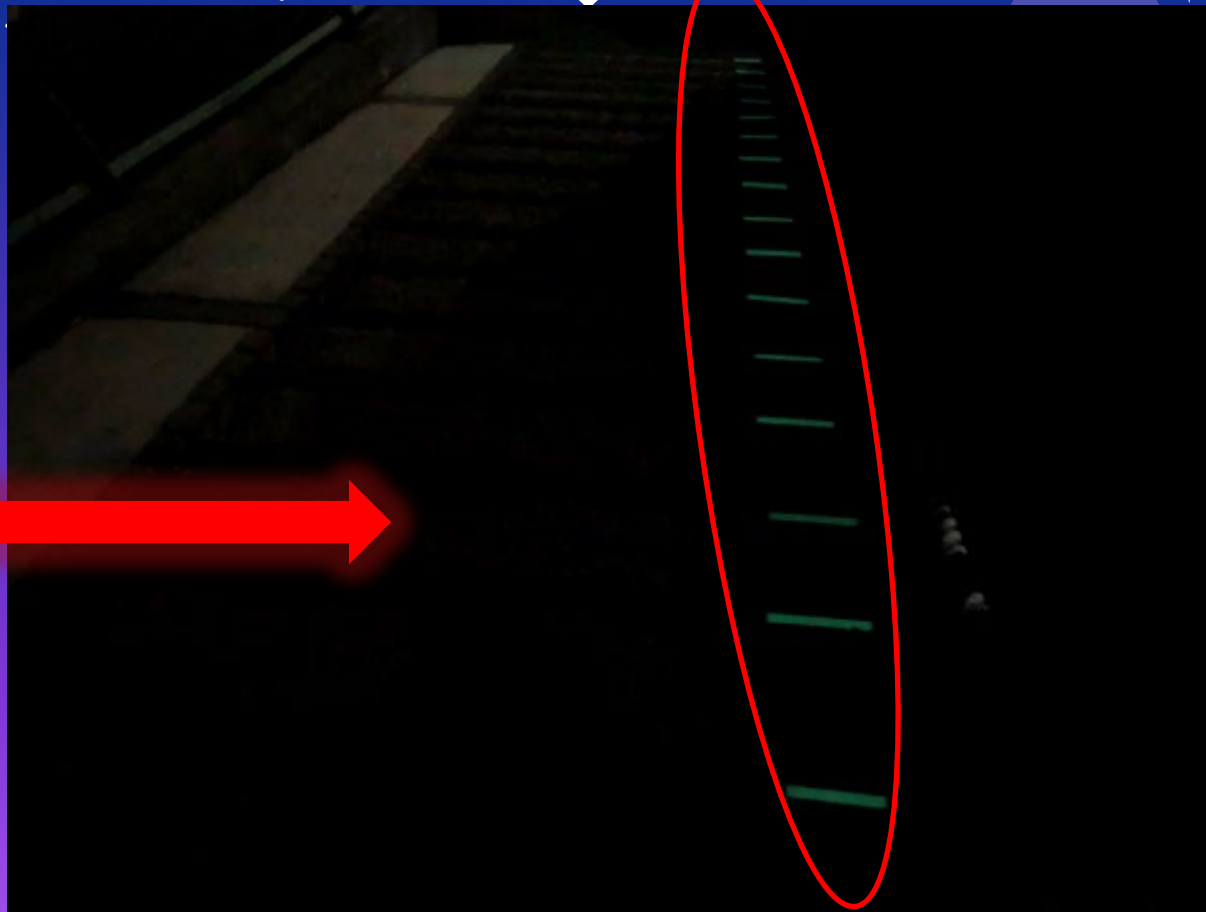
The corner of parking place



For
the safety

Example 2

stairs



Technical explanation

This product that has been developed using our original resin blend and photo luminescent pigment processing technique. This process involves light energy and then re-emitting it over time, which allows the material to glow after the light source has been removed. The results are permanent luminescence.

Effect

- 1 : Visible to the areas that are not reached by the light of illumination at night.
- 2 : An alternative solution for road and tunnel lighting facility power down at major disasters.

Test result

Lumo Line

18th June 2020

Evaluated by Nissenken Quality Evaluation Center

Measurement : JIS Z 9107

Summary : Lumo line test pieces were kept in the dark for 24hours. These were irradiated by D65 lights for 20minutes. The luminance of these test pieces was 2,10,20,30,60 minutes each.



Luminance meter



※1 By sunshine weather meter, xenon lamp 1800 hours irradiated test result
(=about 7years outside installing equivalent)

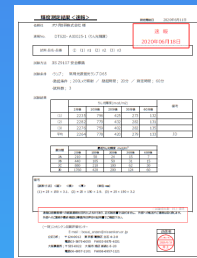


D65light

Japanese standards as
a safety sign of photo luminescent

Double luminance for High class standards of JD

Even after 7 years of outdoor exposure, the decrease in brightness is about 10%



Elapsed time (min)	2	10	20	30	60
Test result (mcd/m ²)	2397	843	453	301	142
Accelerated aging test result (mcd/m ²) ※1	2314	787	416	274	127

Elapsed time (min)		2	10	20	30	60
JIS Z 9107	JA class	210	50	24	15	7
	JB class	440	105	50	31	15
	JC class	880	210	100	62	30
	JD class	1760	420	200	124	60
Fire Equipment and Safety Center of Japanstandards	S ₂₀₀ Grade	-	-	250	-	75
	A ₂₀₀ Grade	-	-	200	-	60
	B ₂₀₀ Grade	-	-	150	-	45
	C ₂₀₀ Grade	-	-	100	-	30

Installing condition

- Flat floor or wall, no different level, not vehicle road
- Base ground : Concrete, Asphalt, Steal, Wood

Price

Product's name

Price

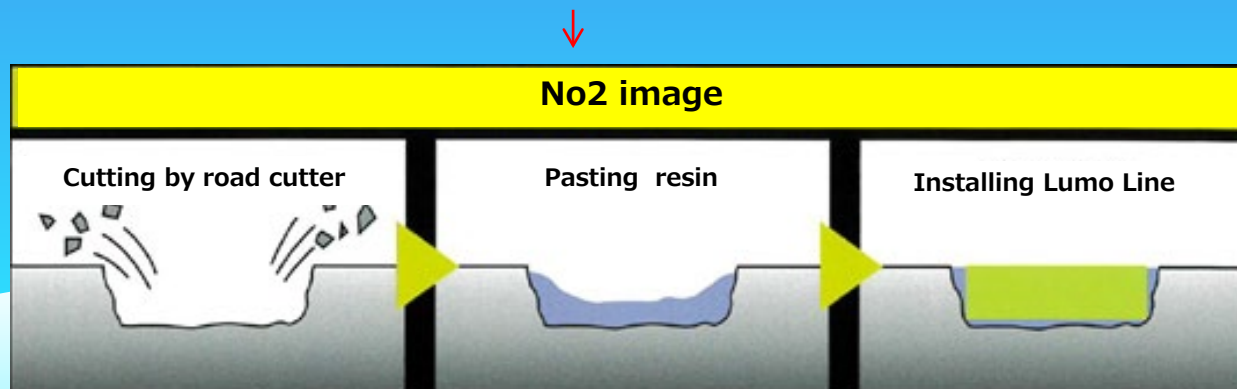
(Except Shipping fee and Custom clearance)

Lumo Line-25
(150×25×3)

→ 1,460 JPY/ line (year 2024 market price)

How to installing

- 1 : Paste appropriate resin to the backside of Lumo Line on the part you want to install.
= Easiest method!
- 2 : ① Cut the part with a road cutter and paste resin on.
② Installing Lumo Line before the resin has cured.
※Before this process you must use a cover seal material on the surface of Lumo Line.



Process(no2)

Lumo Line



① Cutting the part by
a handy type of road cutter

Depth : 3 mm

② pouring and pasting resin



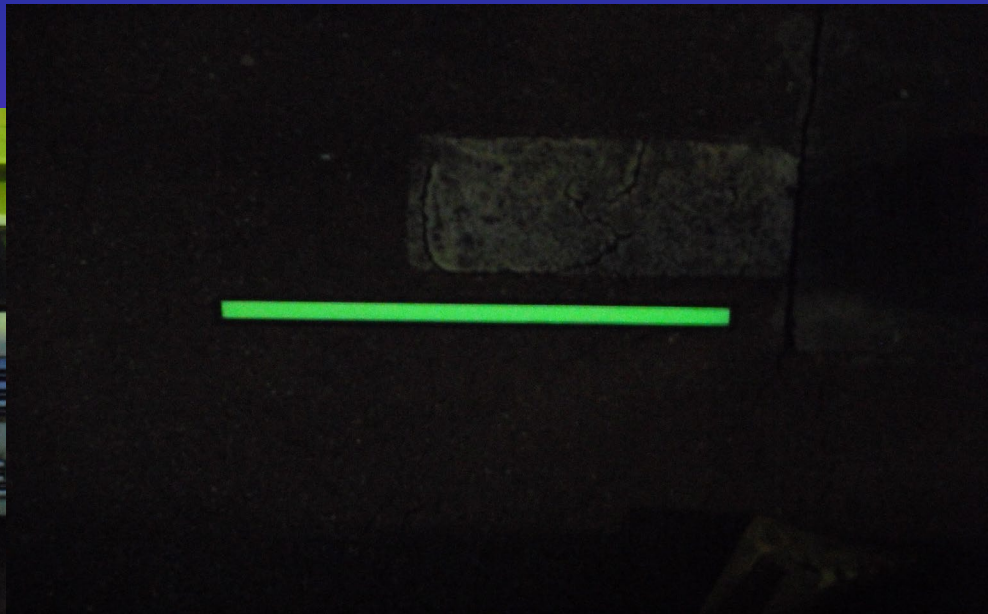
③ Installing Lumo Line

④ Peeling the cover seal material off

Finish

Example 3

Parking Place



Example 4



Example 5

Lumo Line

Park stairs



Example 6

Walk road

Lumo Line

